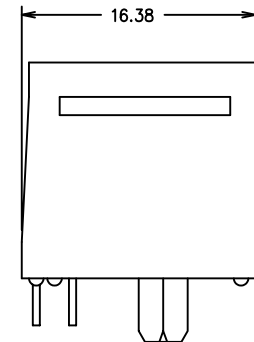
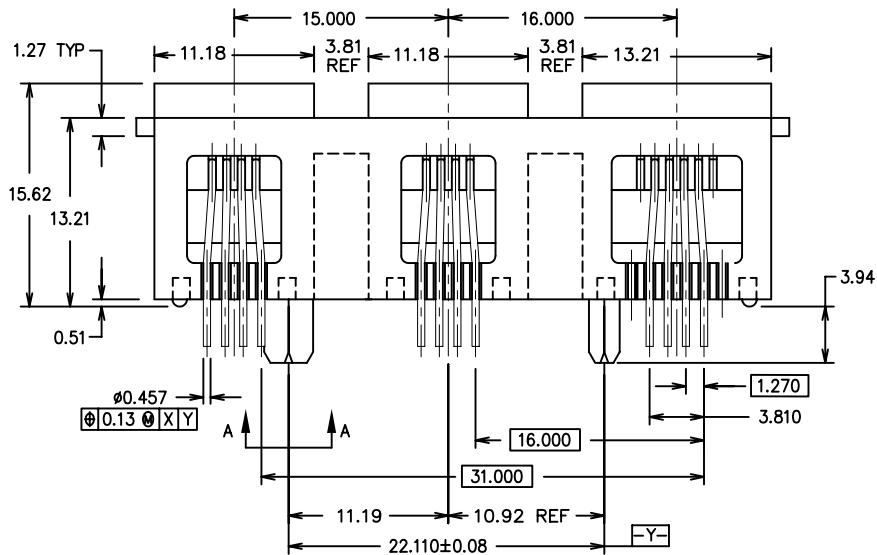
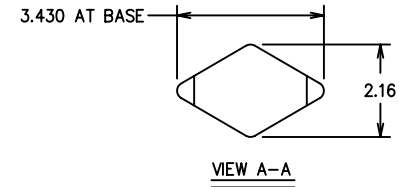
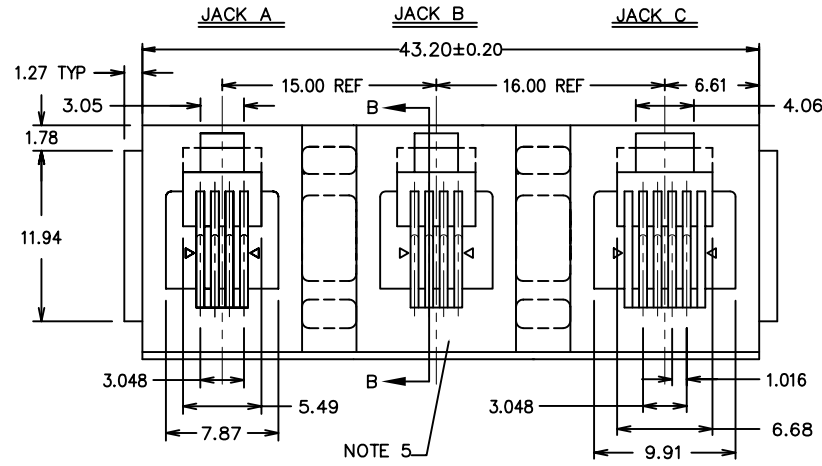


Tous droits strictement reserves. Reproduction ou communication a des tiers interdite sous quelque forme que ce soit sans autorisation ecrite du proprietaire. Propriete de c FCI. Droits de reproduction FCI.

All rights strictly reserved. Reproduction or issue to third parties in any form whatever is not permitted without written authority from the proprietor. Property of FCI. Copyright FCI.



PRODUCT NO.
92266-XXXLF



mat'l. code				tolerances unless otherwise specified		CUSTOMER COPY	 www.fciconnect.com
ltr	ecn no	dr	date	linear	.x±.20		
A	T30227	JT	7/29/93		.xx±.10	projection	title 3-IN-1 GANG JACK SOLID PEG (4P+4P+6P)
B	V51646	LS	1/5/98		.xxx±.05		
C	V80851	GAH	6/24/98	angles	0° ±2°	MM	product family MOD JACK
D	V02238	CSP	10/13/00	dr	K.CHOU	10/5/92	code
E	V10414	BKB	1/23/01	enr	TONY CHEN	10/5/92	size
F	V03-1103	PJ	10/22/03	chr	TONY CHEN	10/5/92	sheet
G	M05-0066	ERE	04/15/05	appd	JENN TSAO	10/5/92	1 of 2
sheet index	revision sheet	G	G	1	2		

cage code
22526

ACAD

PDM: Rev:G

STATUS: Released

Printed: Feb 19, 2008

Tous droits strictement reserves. Reproduction ou communication a des tiers interdite sous quelque forme que ce soit sans autorisation écrite du propriétaire. Propriete de c FCI. Droits de reproduction FCI.

FCI

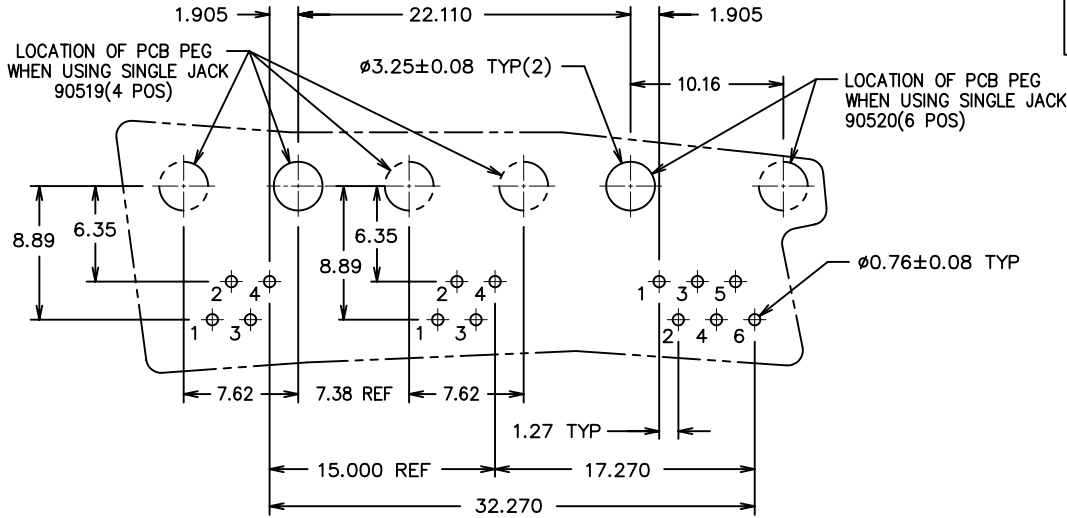
All rights strictly reserved. Reproduction or issue to third parties in any form whatever is not permitted without written authority from the proprietor. Property of FCI. Copyright FCI.

A

B

PRODUCT NO.
92266-XXXLF

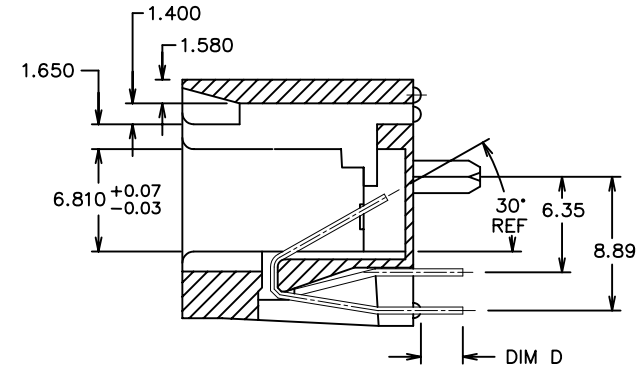
PRODUCT NO ⑥	WIRE NUMBER LOADED			DIM D	PACKAGING NOTE 4
	JACK A(4 POS)	JACK B(4 POS)	JACK C(6 POS)		
92266-X01LF	ALL	ALL	2.3.4.5	2.41±.51	
92266-X02LF	ALL	ALL	2.3.4.5	2.41±.51	GPax
92266-X03LF	ALL	ALL	ALL	2.41±.51	
92266-X04LF	ALL	ALL	ALL	2.41±.51	GPax
92266-X05LF	ALL	ALL	2.3.4.5	3.18±.51	



BOARD LAYOUT VIEW FROM TOP (4 POS + 4 POS + 6POS)

PLATING CODE X	PLATING ⑨
0	.76uM/30u" G.X.T.
3	.76uM/30u" GOLD
5	1.27uM/50u" GOLD

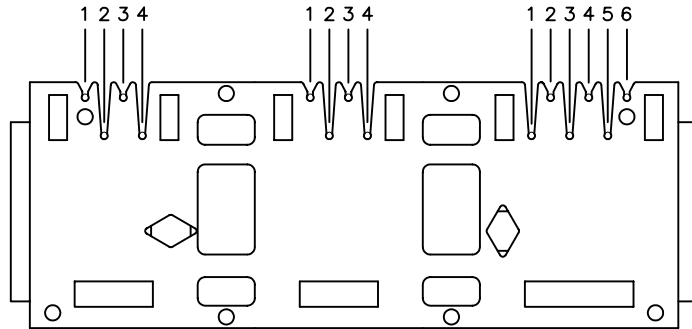
NOTE: PLEASE CHECK FOR AVAILABILITY, NOT ALL OPTIONS AVAILABLE.



SEC B-B

NOTES:

- MATERIAL:
-PLASTIC HSG: POLYESTER 30 % G. F., UL 94V-0, COLOR: BLACK
-CONTACT SPRING WIRE: PHOSPHOR BRONZE ALLOY 510 IN ACCORDANCE WITH ASTM B-159, 0.460mm/.018in DIA ROUND WIRE, SEE TABLE.
- FOR VISUAL, MECHANICAL, AND FUNCTIONAL REQUIREMENTS, SEE PRODUCT SPECIFICATION: BUS-12-008
- THIS PRODUCT COMPLIES WITH FCC PART 68 DIMENSION, TOLERANCE AND PLATING REQUIREMENT.
- UNLESS OTHERWISE SPECIFIED, PRODUCT IS PACKED IN TUBE PER COMPANY PKG SPEC. BUS-14-164.
- COMPANY LOGO LOCATED IN THIS AREA.
- LF SUFFIX AT THE END OF PART NUMBER IS LEAD FREE.
- THE HOUSING WILL WITHSTAND EXPOSURE TO 260°C PEAK TEMPERATURE FOR 15 SECONDS IN A WAVE SOLDER APPLICATION WITH A 1.5mm MINIMUM THICK CIRCUIT BOARD. SEE APPLICATION NOTES/ PROCEDURES IF THEY ARE AVAILABLE.
- THIS PRODUCT MEETS EUROPEAN UNION DIRECTIVES AND OTHER COUNTRY REGULATION AS DESCRIBED IN GS-22-008
- PLATING OPTIONS: MAY BE EITHER GOLD OR GXT PLATED AT MANUFACTURER'S OPTION.



CONTACT SPRING WIRE POS.

mat'l. code		tolerances unless otherwise specified		CUSTOMER COPY	 www.fciconnect.com
ltr	ecn no	dr	date		
G					
				angles	
				dr	product family MOD JACK
				enr	size dwg no
				chr	code
				appd	sheet
				sheet index	revision sheet